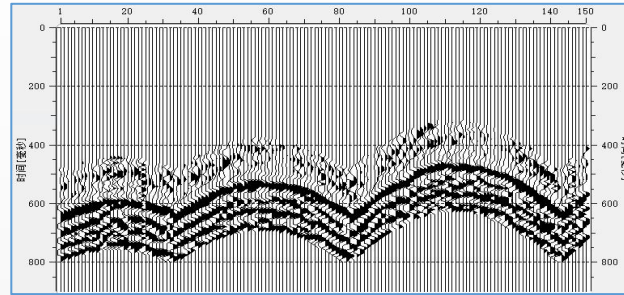


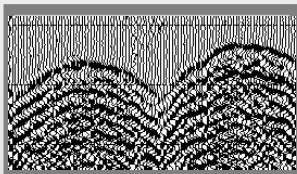


Why WiseCloud  
is safe for your data

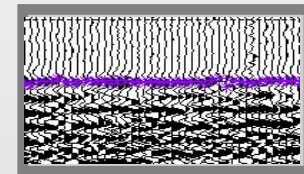
# 3 Steps for Cloud Picking



Step1: Encrypt and Compress data

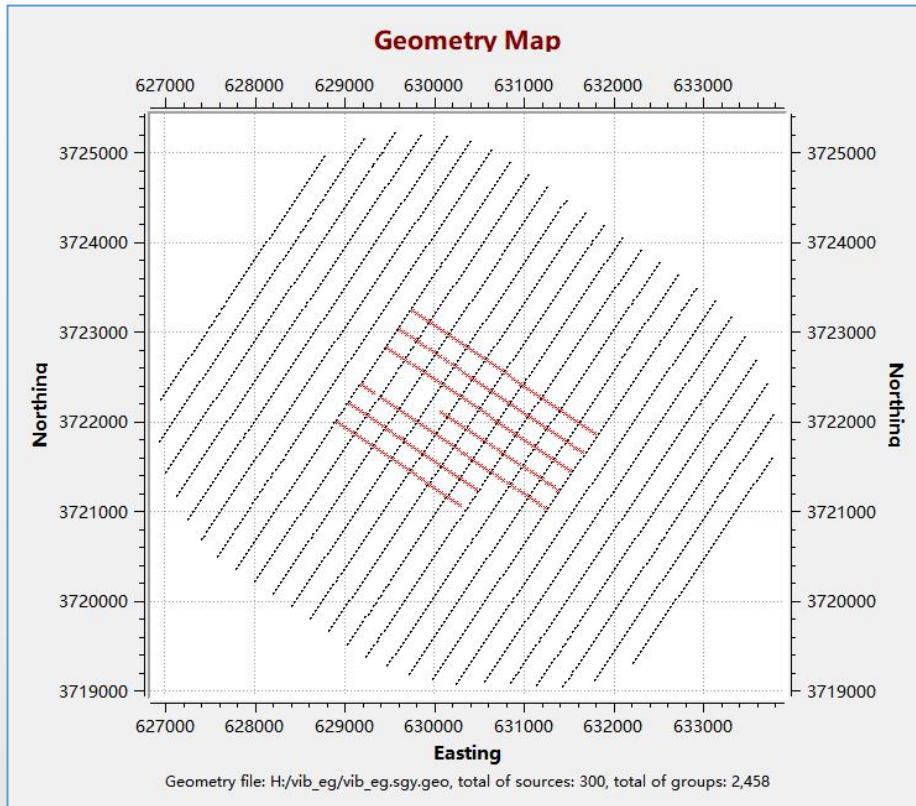


Step3: Calibrate FB

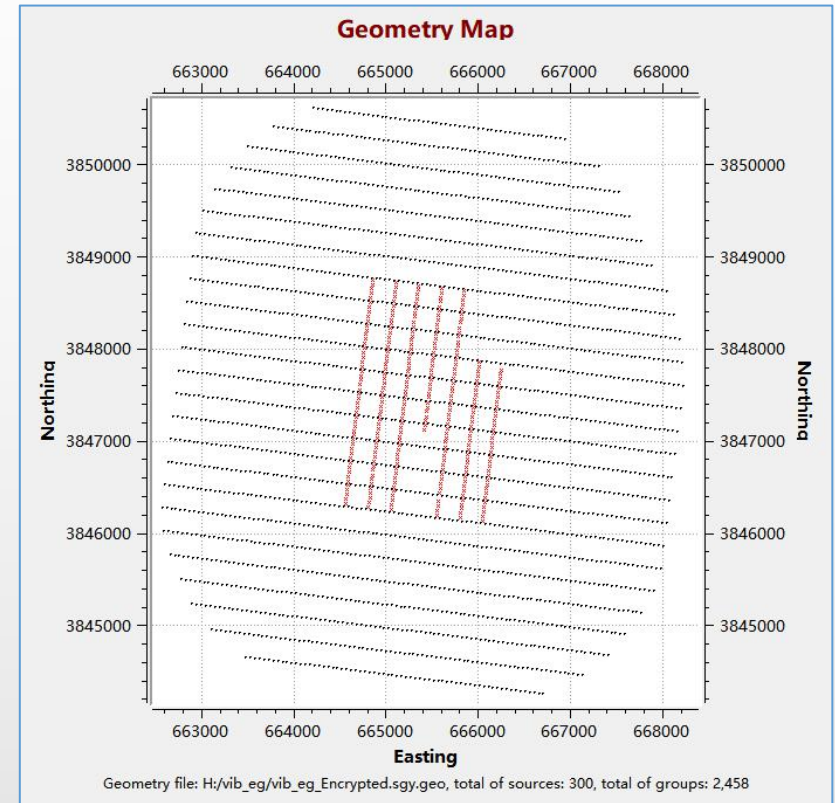


# The 1st reason for data safety

The coordinate is encrypted and can never be restored



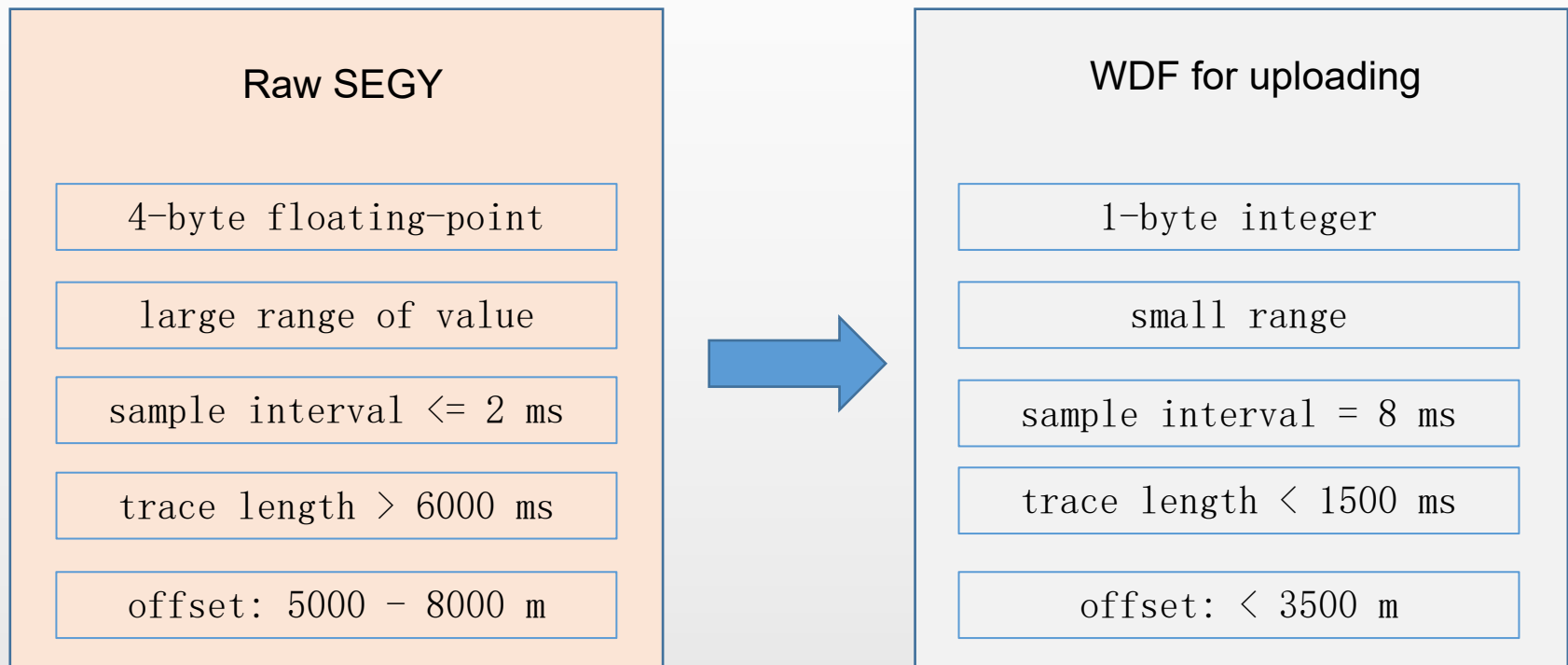
Before encryption



After encryption

# The 2nd reason for data safety

The data uploaded is low accuracy

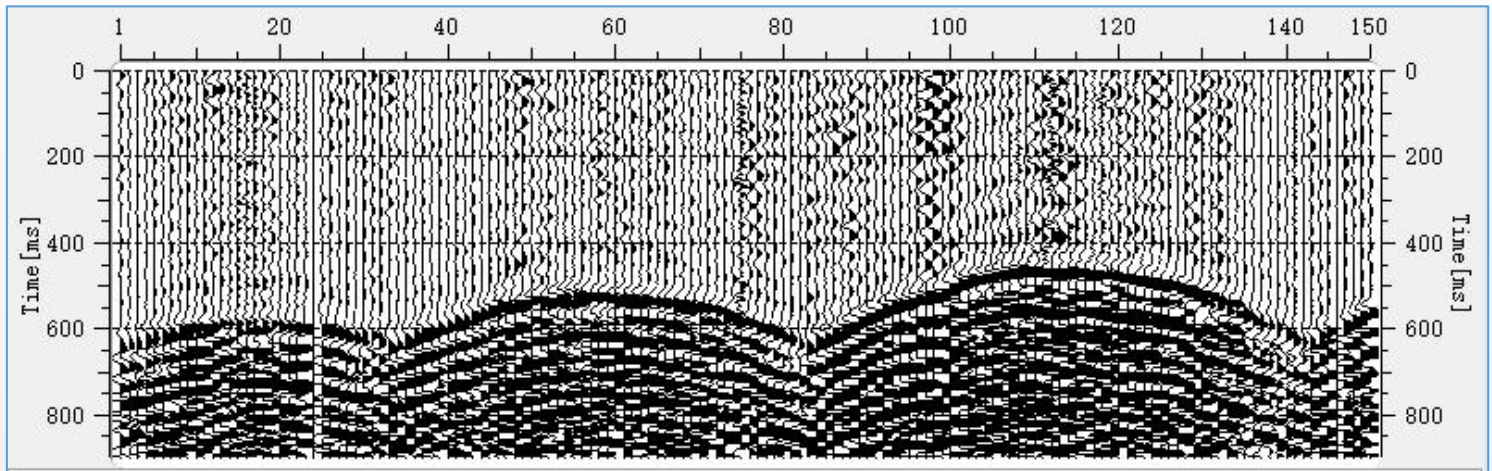


\*if SNR is very low, may be of 2-byte, 4ms.

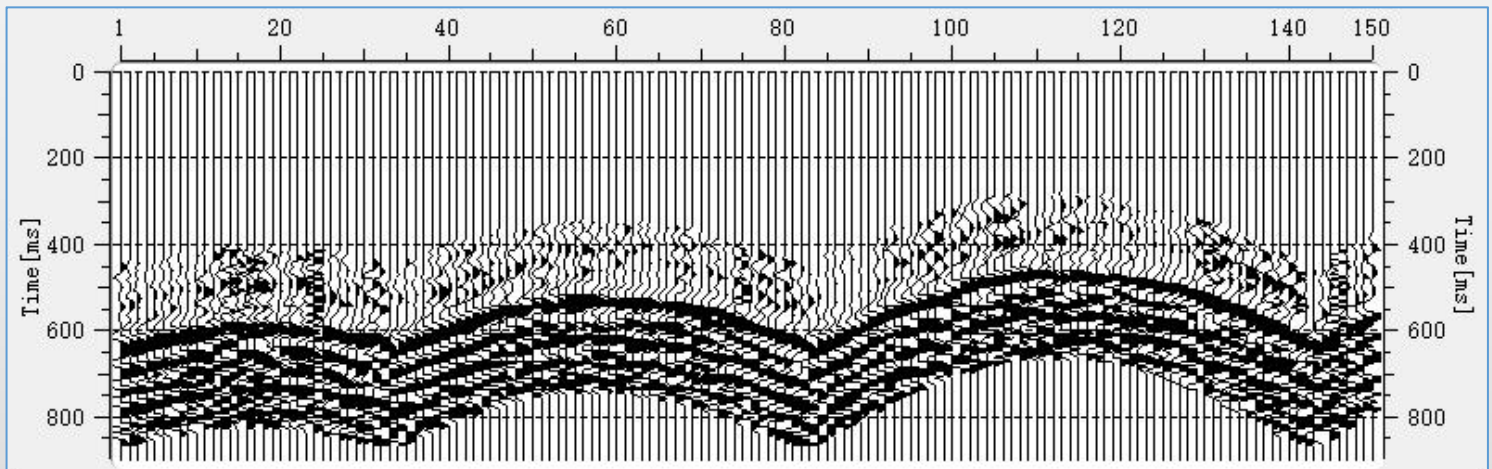
# The 3rd reason for data safety

The valid time gate is less than 500 ms

Raw data



uploaded



# Conclusion

The data uploaded to WiseCloud is:

- (1) with fake coordinates, which can never be restored.
- (2) of low accuracy.
- (3) of sparse-sampled.
- (4) of a short time-gate.
- (5) of limited offset range.

The data security is out of question!